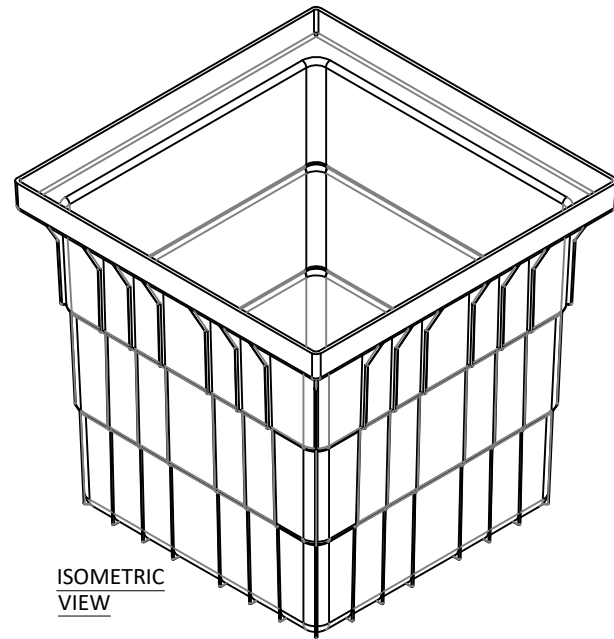
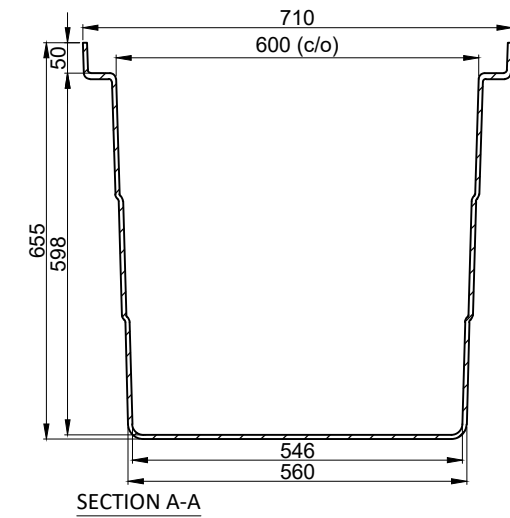
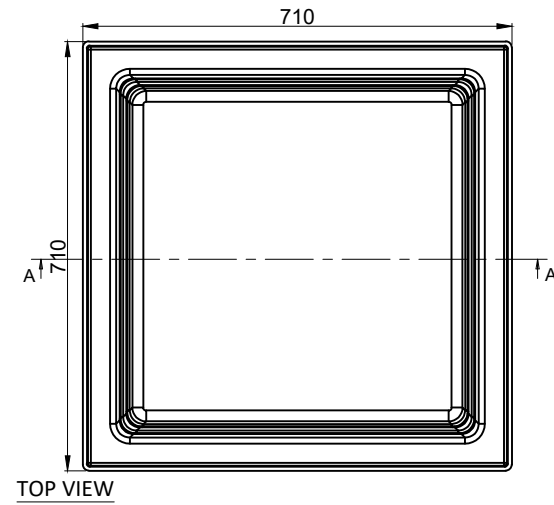
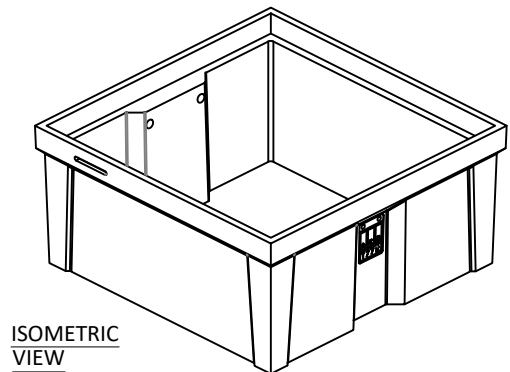
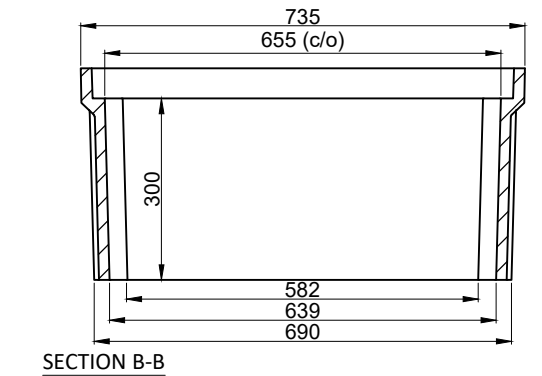
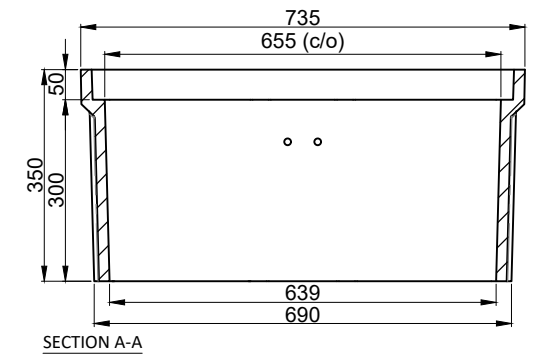
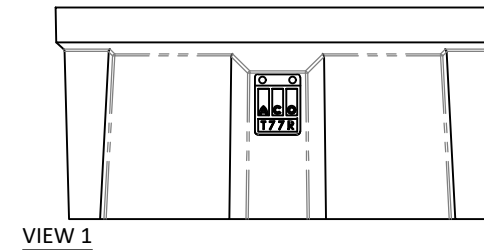
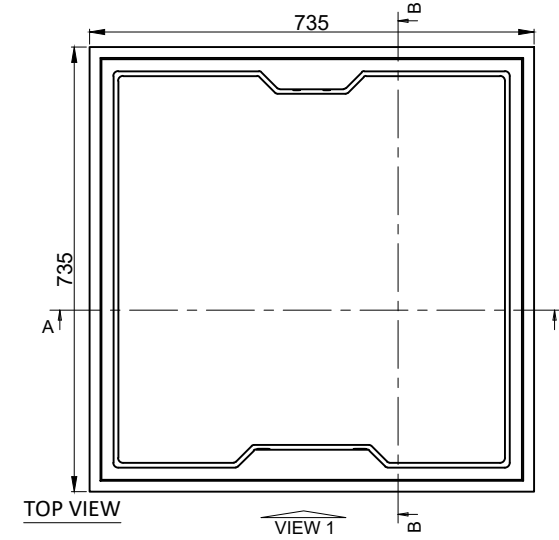


**PIT**



**RISER**



Load Class	Type	Description	Overall Length (mm)	Overall Width (mm)	Overall Depth (mm)	Clear Length (mm)	Clear Width (mm)	Clear Depth (mm)	Weight (kg)	Pallet (Units)	Part Number
A to B*	Type 77	ACO Cablemate® Pit Type 77	710	710	655	600	600	598	13.00	-	76344
A to B*	Type 77	ACO Cablemate® Riser Type 77	735	735	350	655	300	300	47.00	-	76368

\* Check the Lid's load classes

Compatible Lids and Access Covers				
Load Class	Description	Weight Cover <sup>2</sup> (kg)	Weight Total (kg)	Part Number
A10	ACO Cablemate® Lid Polymer Concrete Blank <sup>1 3</sup>	31	31	76382
A10	ACO Cablemate® Lid Polymer Concrete Communications <sup>1 3</sup>	31	31	76396
A10	ACO Cablemate® Lid Polymer Concrete Electricity <sup>1 3</sup>	31	31	76409
B80	ACO Cablemate® Lid Steel <sup>1 4</sup>	20	20	77720
B80	ACO PowerLok® Lid Steel <sup>1 4</sup>	25	25	77730
B80	ACO Urbanfil® Steel Recessed Cover <sup>1</sup>	24	32	81601
B80	ACO Pavermate® Steel Recessed Cover <sup>1</sup>	25	33	81372
B80	ACO Rhinocast® Ductile Iron Recessed Cover <sup>1</sup>	60	87	85061
B80	ACO Rhinocast® Ductile Iron Solid Cover <sup>1</sup>	60	91	85274

1. Refer to ACO Cablemate® literature for details  
2. Lifting weight - kg

3. Lid dimension: 692 x 690 x 50 (mm)  
4. Lid dimension: 693 x 693 x 48 (mm)

**General**

The cable pit shall be ACO Cablemate® Type 77 with lid/access cover\* (see below) as manufactured by ACO Pty Ltd. or equal approved. Polyethylene moulded pits feature a ribbed construction for strength and durability. The cable pit shall be installed in accordance with the manufacturer's installation instructions and recommendations.

**Materials/Properties**

The pit body shall be manufactured from polyethylene with:  
 Electrical resistivity =  $1 \times 10^{16} \Omega / \text{sq}$       Flexural strength: 15MPa      Water absorption 0.31%  
 Frost proof      Salt proof      Dilute acid and alkali resistant  
 Surface burn characteristics of the material shall comply with UL 723      IP ratings up to IP4X (AS 60529) - enclosure protection against ingress

The nominal clear opening shall be 600mm x 600mm. Units shall be manufactured with a clear depth of 598mm.

**Lid/Access cover**

The pit shall be covered with a CableMate® polymer concrete/steel lid, PoweLok®, Urbanfil®/Pavermate® access cover, Rhinocast® access cover - see table for compatible options.

**SPECIFICATION SHEET**

Drawn: Danilo V.      Revision: 00  
 Verified: George S.      Date: April/21

Brand: **ACO CABLEMATE®**  
 Product: **ACO CABLEMATE® Polyethylene Pit Type 77**



**ACO Limited**  
 Unit F/6 Percival Gull Place  
 Mangere  
 Auckland 2022  
 Tel: 0800 448 080  
 Fax: +64 9255 5114  
 Email: info@aconz.co.nz