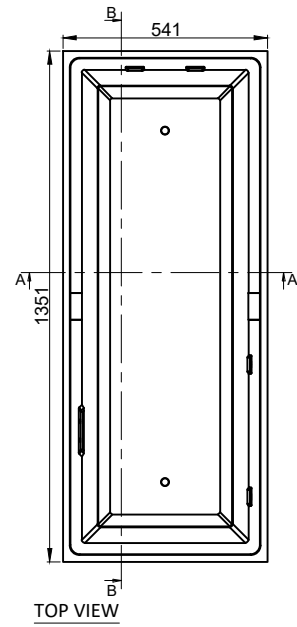
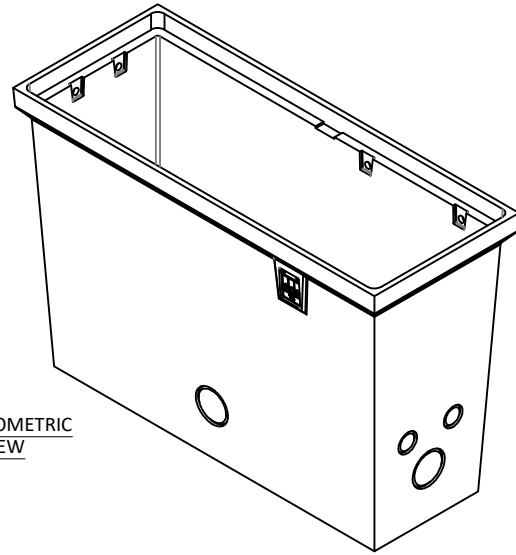


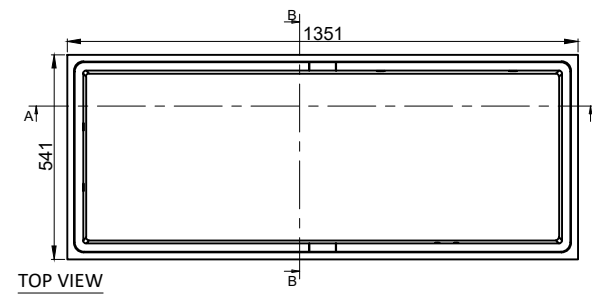
**PIT**



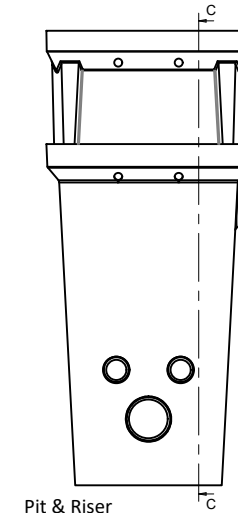
ISOMETRIC VIEW



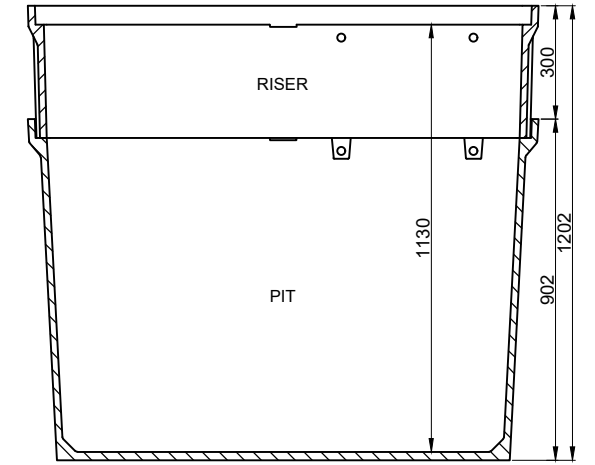
**RISER**



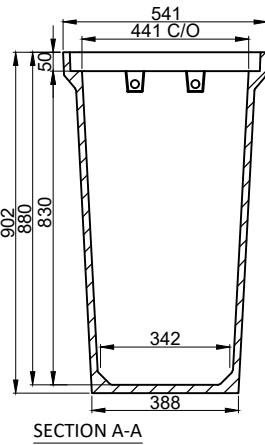
TOP VIEW



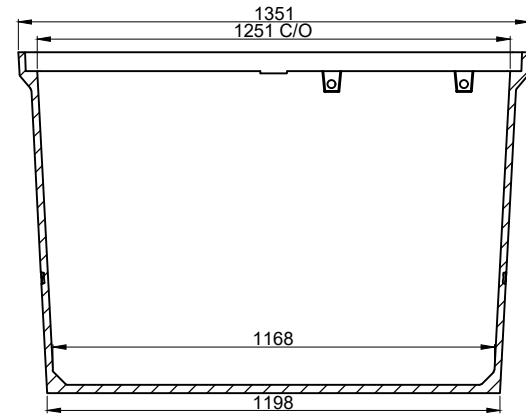
Pit & Riser Elevation



SECTION C-C



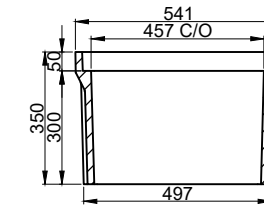
SECTION A-A



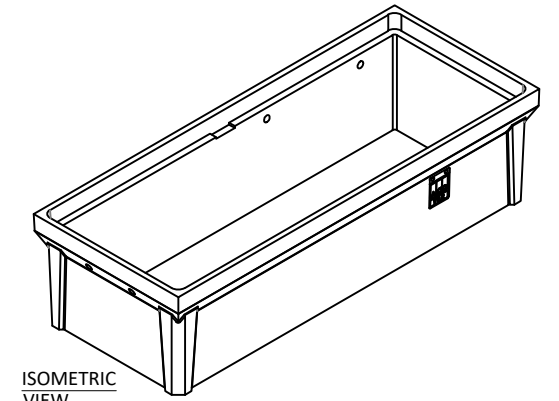
SECTION B-B



SECTION A-A



SECTION B-B



ISOMETRIC VIEW

Compatible Lids and Access Covers				
Load Class	Description	Weight Cover <sup>2</sup> (kg)	Weight Total (kg)	Part Number
A10	ACO Cablemate® Lid Cement Concrete 2-Part Blank <sup>1,3</sup>	33	69	75010
A10	ACO Cablemate® Lid Cement Concrete 2-Part Communications <sup>1,3</sup>	33	69	75011
A10	ACO Cablemate® Lid Cement Concrete 2-Part Electricity <sup>1,3</sup>	33	69	75012
B80	ACO Cablemate® Lid Steel 2-Part <sup>1,4</sup>	15	31	76820
B80	ACO PowerLok® Lid Steel 2-Part <sup>1,4</sup>	20	39	76830
B80	ACO Urbanfil® Steel Recessed Cover <sup>1</sup>	13	39	82567
B80	ACO Pavermate® Steel Recessed Cover <sup>1</sup>	15	41	82373
B80	ACO Rhinocast® Ductile Iron Recessed Cover <sup>1</sup>	30	91	85433
B80	ACO Rhinocast® Ductile Iron Solid 2-Part Cover <sup>1</sup>	28	89	86853
D240	ACO Rhinocast® Ductile Iron Recessed Cover <sup>1</sup>	51	182	89431
D240	ACO Rhinocast® Ductile Iron Solid 2-Part Cover <sup>1</sup>	51	169	80855
G900	ACO Rhinocast® Ductile Iron Recessed 2-Part Cover <sup>1</sup>	135	358	87463

Load Class	12	Description	Overall Length (mm)	Overall Width (mm)	Overall Depth (mm)	Clear Length (mm)	Clear Width (mm)	Clear Depth (mm)	Weight (kg)	Pallet (Units)	Part Number
A to G*	Type 8	ACO Cablemate® Pit Type 8	1351	541	902	1251	441	830	154.50	-	74991
A to G*	Type 8	ACO Cablemate® Riser Type 8	1351	541	350	1267	457	300	58.70	-	73419

\* Check the Lid's load classes

1. Refer to ACO Cablemate® literature for details  
2. Lifting weight - kg

3. Lid dimension: 651 x 499 x 50 (mm)  
4. Lid dimension: 655 x 500 x 48 (mm)

**General**

The cable pit shall be ACO Cablemate® Type 8 with lid/access cover\* (see below) as manufactured by ACO Pty Ltd. or equal approved. The cable pit shall be installed in accordance with the manufacturer's installation instructions and recommendations.

**Materials/Properties**

The pit/riser bodies shall be manufactured from polymer concrete with:  
 Electrical resistivity = 1 x 10<sup>9</sup> Ω /sq      Compressive strength: 96MPa      Flexural strength: 27MPa      Water absorption 0.07%  
 Frost proof      Salt proof      Dilute acid and alkali resistant

The nominal clear opening shall be 1251mm x 441mm. Units shall be manufactured with a clear depth of 830mm.

**Optional riser**

Additional height can be added using one or two polymer concrete riser units - each riser adds up to 300mm height.

**Lid/Access cover**

The pit shall be covered with a CableMate® cement concrete/steel lid, PoweLok®, Urbanfil®/Pavermate® access cover, Rhinocast® access cover - see table for compatible options.

**SPECIFICATION SHEET**

Drawn: Danilo V.      Revision: 00  
 Verified: George S.      Date: March/21

Brand:

ACO CABLEMATE®

Product:

ACO CABLEMATE®  
 Polymer Pit Type 8  
 Polymer Riser Type 8



**ACO Limited**  
 Unit F/6 Percival Gull Place  
 Mangere  
 Auckland 2022  
 Tel: 0800 448 080  
 Fax: +64 9255 5114  
 Email: info@aconz.co.nz