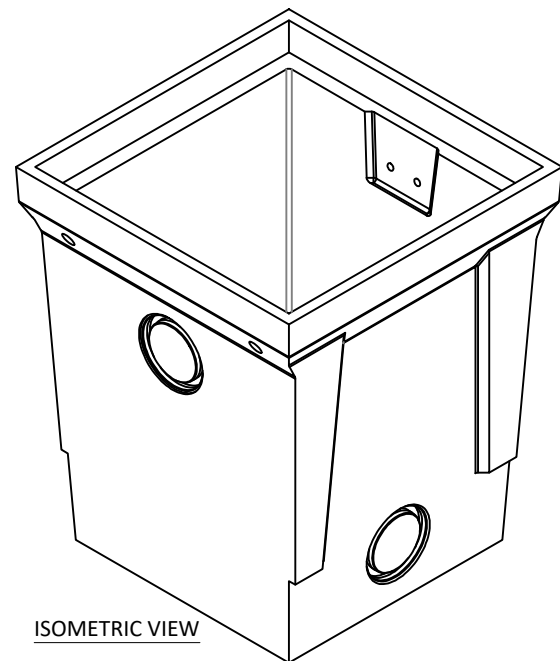
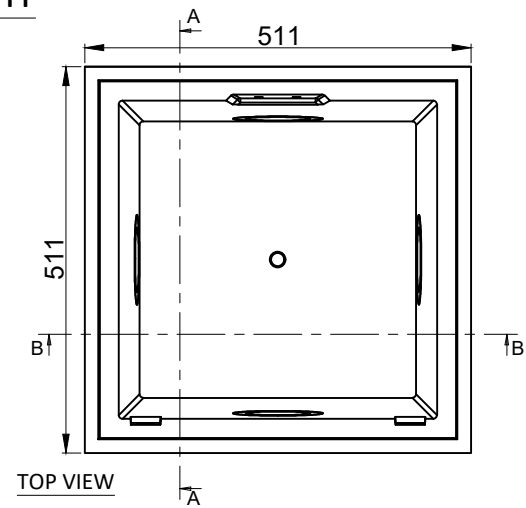
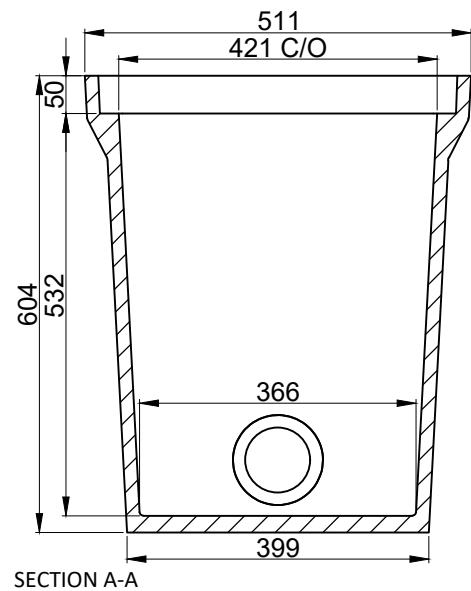


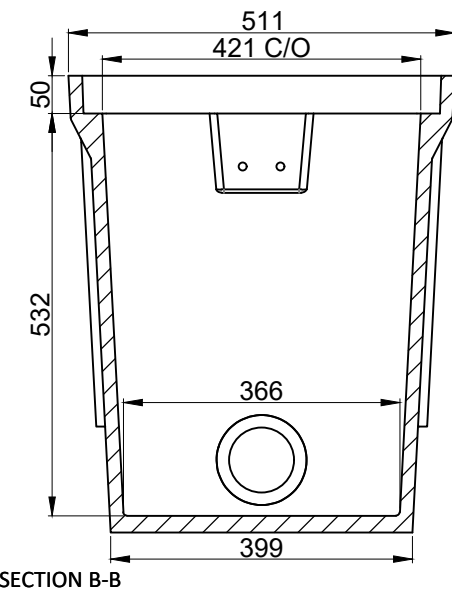
**PIT**



ISOMETRIC VIEW

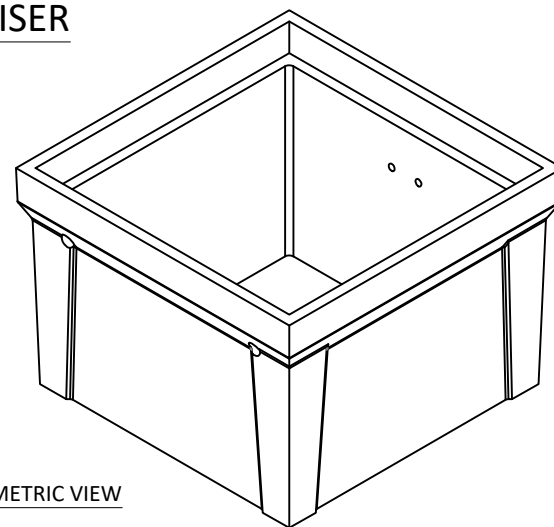


SECTION A-A

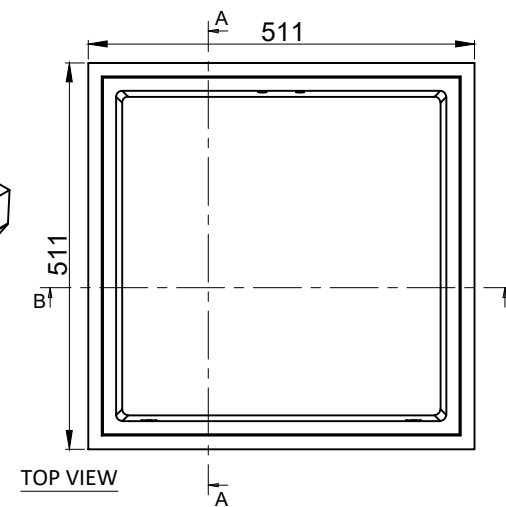


SECTION B-B

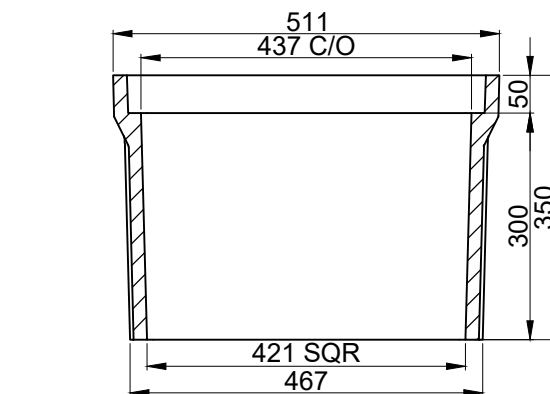
**RISER**



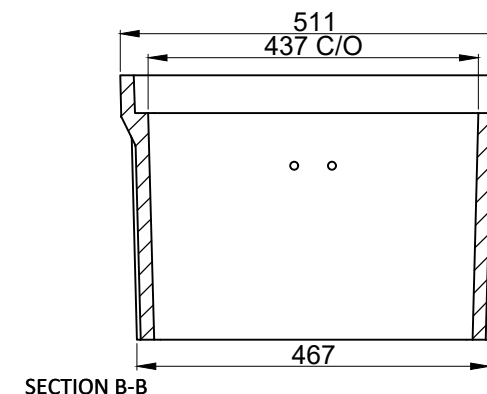
ISOMETRIC VIEW



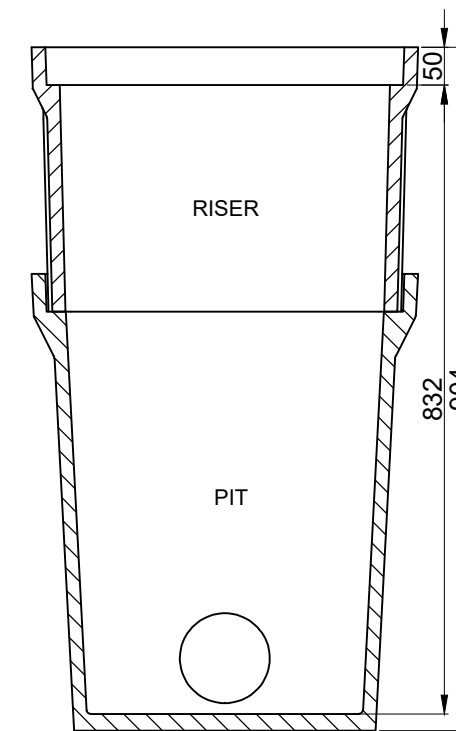
TOP VIEW



SECTION A-A



SECTION B-B



PIT & RISER ASSEMBLY SECTION A-A

| Compatible Lids and Access Covers |   |                                |                   |             |
|-----------------------------------|---|--------------------------------|-------------------|-------------|
| Load Class                        | Description   | Weight Cover <sup>2</sup> (kg) | Weight Total (kg) | Part Number |
| A10                               | ACO Cablemate® Lid Polymer Concrete Blank <sup>1 3</sup>          | 15                             | 15                | 75400       |
| A10                               | ACO Cablemate® Lid Polymer Concrete Communications <sup>1 3</sup> | 15                             | 15                | 75414       |
| A10                               | ACO Cablemate® Lid Polymer Concrete Electricity <sup>1 3</sup>    | 15                             | 15                | 75427       |
| B80                               | ACO Cablemate® Lid Steel <sup>1 4</sup>                           | 11                             | 11                | 74521       |
| B80                               | ACO PowerLok® Lid Steel <sup>1 4</sup>                            | 14                             | 14                | 74530       |
| B80                               | ACO Urbanfil® Steel Recessed Cover <sup>1</sup>                   | 11                             | 16                | 81520       |
| B80                               | ACO Pavermate® Steel Recessed Cover <sup>1</sup>                  | 12                             | 18                | 81305       |
| B80                               | ACO Rhinocast® Ductile Iron Recessed Cover <sup>1</sup>           | 28                             | 40                | 85014       |
| B80                               | ACO Rhinocast® Ductile Iron Solid Cover <sup>1</sup>              | 20                             | 44                | 85249       |
| D240                              | ACO Rhinocast® Ductile Iron Recessed Cover <sup>1</sup>           | 42                             | 83                | 89013       |
| D240                              | ACO Rhinocast® Ductile Iron Solid Cover <sup>1</sup>              | 46                             | 86                | 89268       |
| G900                              | ACO Rhinocast® Ductile Iron Recessed Cover <sup>1</sup>           | 86                             | 138               | 87016       |

| Load Class | Type    | Description                  | Overall Length (mm) | Overall Width (mm) | Overall Depth (mm) | Clear Length (mm) | Clear Width (mm) | Clear Depth (mm) | Weight (kg) | Pallet (Units) | Part Number |
|------------|---------|------------------------------|---------------------|--------------------|--------------------|-------------------|------------------|------------------|-------------|----------------|-------------|
| A to G*    | Type 45 | ACO Cablemate® Pit Type 45   | 511                 | 511                | 604                | 421               | 421              | 532              | 47.00       | -              | 75362       |
| A to G*    | Type 45 | ACO Cablemate® Riser Type 45 | 511                 | 511                | 350                | 437               | 437              | 300              | 27.30       | -              | 75389       |

\* Check the Lid's load classes

1. Refer to ACO Cablemate® literature for details  
2. Lifting weight - kg

3. Lid dimension: 465 x 465 x 50 (mm)  
4. Lid dimension: 470 x 470 x 48 (mm)

**General**

The cable pit shall be ACO Cablemate® Type 45 with lid/access cover\* (see below) as manufactured by ACO Pty Ltd. or equal approved. The cable pit shall be installed in accordance with the manufacturer's installation instructions and recommendations.

**Materials/Properties**

The pit/riser bodies shall be manufactured from polymer concrete with:  
 Electrical resistivity = 1 x 10<sup>9</sup> Ω /sq      Compressive strength: 96MPa      Flexural strength: 27MPa      Water absorption 0.07%  
 Frost proof      Salt proof      Dilute acid and alkali resistant

The nominal clear opening shall be 421mm x 421mm. Units shall be manufactured with a clear depth of 532mm.

**Optional riser**

Additional height can be added using one or two polymer concrete riser units - each riser adds up to 300mm height.

**Lid/Access cover**

The pit shall be covered with a CableMate® polymer concrete/steel lid, PoweLok®, Urbanfil®/Pavermate® access cover, Rhinocast® access cover - see table for compatible options.

**SPECIFICATION SHEET**

Drawn: Danilo V.      Revision: 00  
 Verified: George S.      Date: March/21

Brand: **ACO CABLEMATE®**  
 Product: **ACO CABLEMATE®**  
**Polymer Pit Type 45**  
**Polymer Riser Type 45**



**ACO Limited**  
 Unit F/6 Percival Gull Place  
 Mangere  
 Auckland 2022  
 Tel: 0800 448 080  
 Fax: +64 9255 5114  
 Email: info@aconz.co.nz