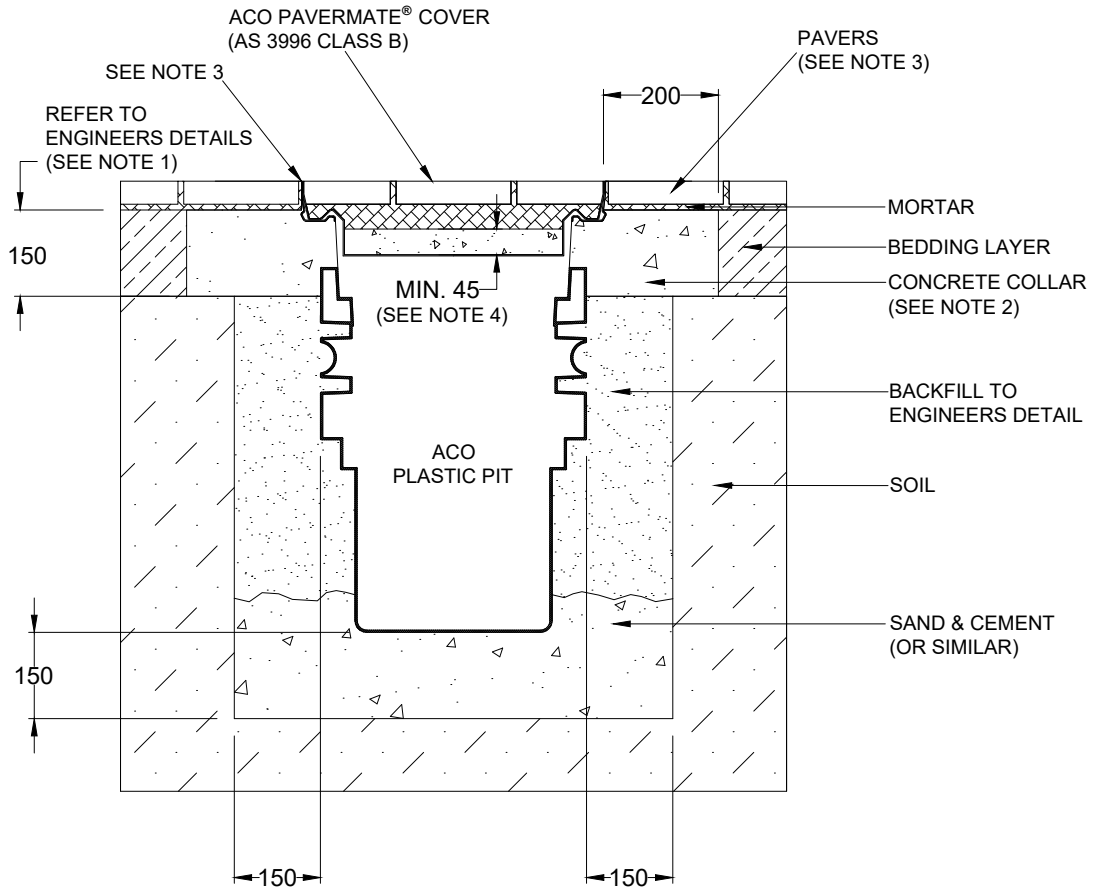


ACO CABLEMATE®	PLASTIC PIT INSTALLATION DRAWING	
DRWG# XCHP-CP-3 www.aconz.co.nz	With Pavermate® Cover	

Pavers: For 5000kg Nominal Wheel Load



NOTES:

1. Specific site conditions may require an increase in these dimensions or reinforcement. It is the customer's responsibility to ensure the installation drawing is detailed for the application and the pit structure is protected from undue stress. *Engineering advice may be required.*
2. A minimum concrete strength of 25MPa is recommended for the collar. The concrete should be vibrated to eliminate air pockets.
3. The finished level of the pavers must be flush with the top of the frame and the pavers must be fully bonded to the concrete collar.
4. 45mm minimum thickness of concrete must be set into the base of the cover prior to bedding the pavers.
5. Refer to ACO's latest installation instructions for complete details.

ACO CABLEMATE®	PLASTIC PIT SPECIFICATION CLAUSE	ACO Limited Unit F/6 Percival Gull Place Mangere, Auckland 2022 Tel: 0800 448 080 Fax: +64 9255 5114 Email: info@aconz.co.nz
DRWG# XCHP-CP-3 www.aconz.co.nz	With Pavermate® Cover	

The cable enclosure(s) (for a nominal wheel load of 5000kg) with a *clear opening(s)* of shall be **ACO Polyethylene Plastic Pit(s) Type (s)** and *part no.(s)* with **Pavermate®** cover(s) and *part no.(s)*

All materials and components within the scope of the system shall be obtained from ACO and the work shall be carried out as specified in accordance with the manufacturer installation recommendations.