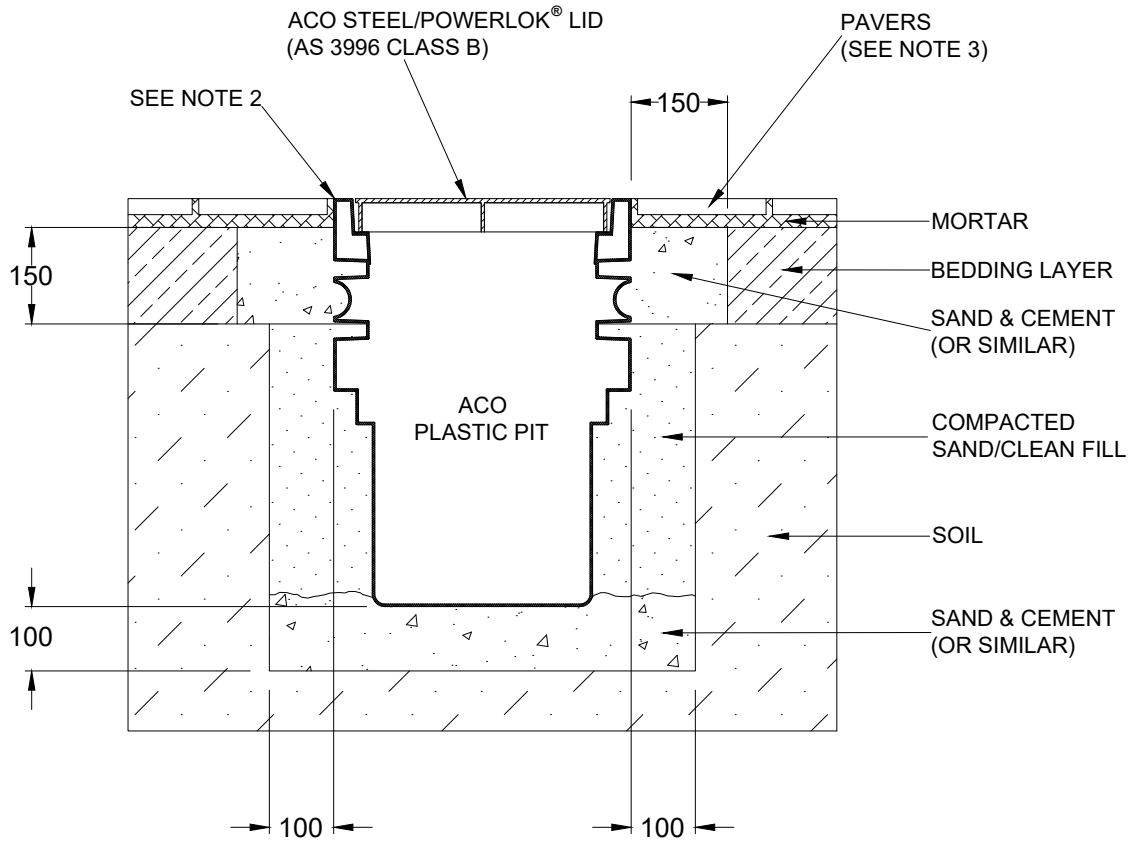


ACO CABLEMATE®	PLASTIC PIT INSTALLATION DRAWING	
DRWG# XCHG-BP-3 www.aconz.co.nz	With Steel / PowerLok® Lid	
Pavers: For 2670kg Nominal Wheel Load		



- NOTES:**
1. Specific site conditions may require an increase in these dimensions or reinforcement. It is the customer's responsibility to ensure the installation drawing is detailed for the application and pit structure is protected from undue stress. *Engineering advice may be required.*
 2. The finished level of the pavers must be flush with the top of the pit.
 3. The paver course adjacent to the pit edge must be fully bonded to the sand & cement.
 4. Refer to ACO's latest installation instructions for complete details.

ACO CABLEMATE®	PLASTIC PIT SPECIFICATION CLAUSE	ACO Limited Unit F/6 Percival Gull Place Mangere, Auckland 2022 Tel: 0800 448 080 Fax: +64 9255 5114 Email: info@aconz.co.nz
DRWG# XCHG-BP-3 www.aconz.co.nz	With Steel / PowerLok® Lid	

The cable enclosure(s) (for a nominal wheel load of 2670kg) with a *clear opening(s)* of shall be **ACO Polyethylene Plastic Pit(s) Type (s)** and *part no.(s)* with Steel / **PowerLok®** lid(s) and *part no.(s)*

All materials and components within the scope of the system shall be obtained from ACO and the work shall be carried out as specified in accordance with the manufacturer installation recommendations.