
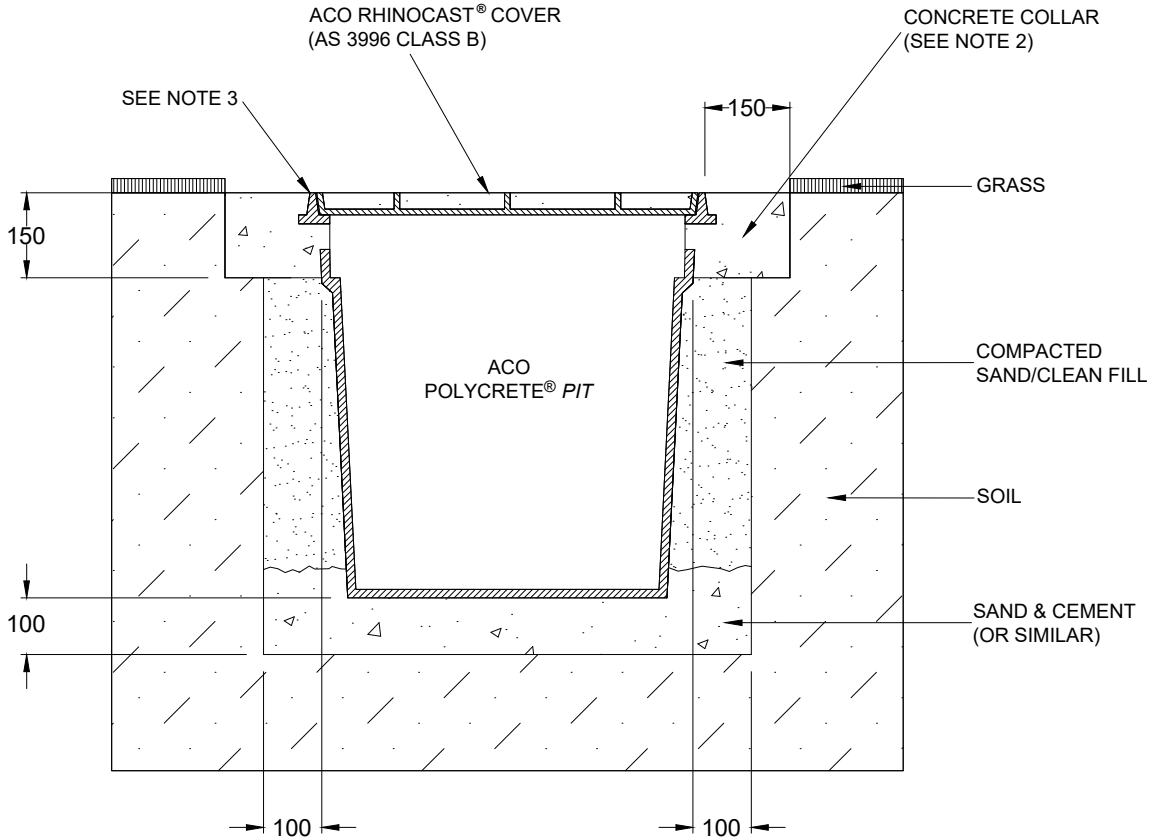


|   |   |   |
|---|---|---|
| <b>ACO CABLEMATE®</b>                       | <b>POLYCRETE® PIT<br/>INSTALLATION DRAWING</b>    |  |
| DRWG# XCPR-BG-3<br>www.aconz.co.nz          | <b>With Rhinocast® Recessed / Solid Top Cover</b> |   |
| <b>Grass: For 2670kg Nominal Wheel Load</b> |   |   |



**NOTES:**

1. Specific site conditions may require an increase in these dimensions or reinforcement. It is the customer's responsibility to ensure the installation drawing is detailed for the application and pit structure is protected from undue stress. *Engineering advice may be required.*
2. A minimum concrete strength of 25MPa is recommended for the collar. The concrete should be vibrated to eliminate air pockets.
3. The finished level of the concrete collar must be flush with the top of the frame.
4. Refer to ACO's latest installation instructions for complete details.

|                                    |   |   |
|------------------------------------|---|---|
| <b>ACO CABLEMATE®</b>              | <b>POLYCRETE® PIT<br/>SPECIFICATION CLAUSE</b>    | ACO Limited<br>Unit F/6 Percival Gull Place<br>Mangere, Auckland 2022<br>Tel: 0800 448 080<br>Fax: +64 9255 5114<br>Email: info@aconz.co.nz |
| DRWG# XCPR-BG-3<br>www.aconz.co.nz | <b>With Rhinocast® Recessed / Solid Top Cover</b> |   |

The cable enclosure(s) (for a nominal wheel load of 2670kg) with a *clear opening(s)* of ..... shall be **Polycrete® Pit(s) Type (s)** ..... and *part no.(s)* ..... with **Rhinocast® Recessed / Solid Top cover(s)** and *part no.(s)* .....

All materials and components within the scope of the system shall be obtained from ACO and the work shall be carried out as specified in accordance with the manufacturer installation recommendations.